



STEALTH™ 700

QUICK START GUIDE GUIDE DE DÉMARRAGE RAPIDE

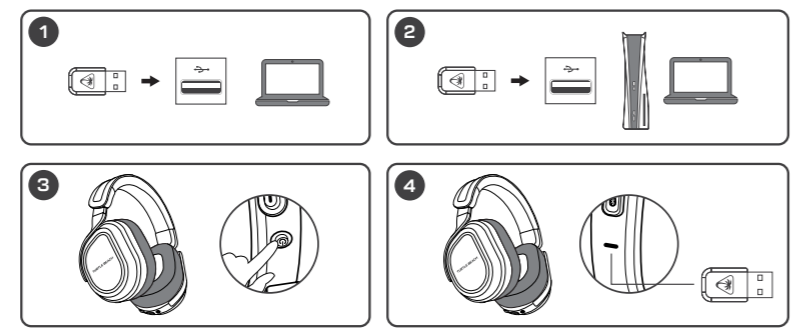
PC VERSION

IMPORTANT READ BEFORE USING

IMPORTANT LIRE AVANT UTILISATION

STEALTH 700 GEN 3
CERTIFICATION MODEL:
HEADSET: HWB80006
DONGLE: HWA0010

SETUP FOR PC AND PLAYSTATION® CONFIGURATION POUR PC, ET PLAYSTATION®



- EN**
- Connect the wireless transmitter to the USB port on PC (optional) Connect the second wireless transmitter to the USB port on PlayStation® or second PC
 - Power on headset
 - Wait for headset and USB wireless transmitter to pair
- ES**
- Conecta el transmisor inalámbrico al puerto USB del PC (Opcional) Conecta el segundo transmisor inalámbrico al puerto USB de la PlayStation® o el segundo PC
 - Enciende los auriculares
 - Espera a que se emparejen los auriculares y el transmisor inalámbrico USB
- FR**
- Connectez l'émetteur sans-fil au port USB du PC (optionnel) Connectez le deuxième émetteur sans-fil au port USB de la PlayStation® ou du deuxième PC
 - Allumez le casque
 - Attendez que le casque et l'émetteur sans-fil USB s'appairent
- DE**
- Verbinde den Funksender mit dem USB-Anschluss des PC (optional) Verbinde den zweiten Funksender mit dem USB-Anschluss von PlayStation® oder zweitem PC
 - Schalte das Headset ein
 - Warte auf die Kopplung von Headset und USB-Funksender
- JP**
- ワイヤレストランスミッターをPCのUSB端子に接続します
 - オプション2個目のワイヤレストランスミッターをPlayStation®、PCのUSB端子に接続します
 - ヘッドセットの電源を入れます
 - ヘッドセットとUSBワイヤレストランスミッターがペアリングされるのを待ちます
- KO**
- PC의 USB 포트에 무선 트랜스미터를 연결합니다
 - 선택 사항 PlayStation® 또는 두 번째 PC의 USB 포트에 두 번째 무선 트랜스미터를 연결합니다
 - 헤드셋 전원을 켭니다
 - 헤드셋과 USB 무선 트랜스미터가 페어링될 때까지 기다립니다

CROSSPLAY WIRELESS SYSTEM | SYSTÈME SANS-FIL CROSSPLAY

The CrossPlay Wireless System allows you to wirelessly switch between two platforms by pressing the CrossPlay Switch button on the headset. Le système sans-fil CrossPlay vous permet de passer sans fil d'une plateforme à l'autre en appuyant sur le bouton CrossPlay du casque.

Note: Both wireless transmitters must be connected and powered on to allow switching. Switching transmitters will not automatically power on the source platform. Remarque : les deux émetteurs sans-fil doivent être connectés et sous tension pour permettre la commutation. Le fait de changer d'émetteur n'alumera pas automatiquement la plateforme source.

Transmitter Status Statut de l'émetteur	LED Color Couleur de la DEL
Paired (Active) Appairé (actif)	Green Vert
Paired (Stand-by) Appairé (veille)	Amber Orange
Mic is Muted Micro désactivé	Red Rouge

To remove the ear pad and access the regulatory label: Pour changer les coussinets et accéder à la notice réglementaire :

- Remove the left ear pad by pulling the ear pad straight up using your thumb.
- Once you've released the cloth from the lip on top, pull the ear pad straight back and it should slip right off.



To replace the ear pad, follow the same process in reverse. Pour remettre le coussinet en place, veuillez suivre la procédure inverse.

Regulatory Compliance Statements for the STEALTH 700 GEN 3 (Wireless Gaming Headset – Headset Model: HWB80006 & Dongle Model: HWA0010)

Federal Communications Commission (FCC) Compliance Notices
Class B Interference Statement
This equipment has been tested and found to comply with the limits for a Class B digital device, pursuant to Part 15, Subpart B of the FCC Rules. These limits are designed to provide reasonable protection against harmful interference in a residential installation. This equipment generates, uses, and can radiate radio frequency energy and, if not installed and used in accordance with the instructions, may cause harmful interference to radio communications. However, there is no guarantee that interference will not occur in a particular installation. If this equipment does cause harmful interference to radio or television reception, which can be determined by turning the equipment off and on, the user is encouraged to try to correct the interference by one or more of the following measures:

- Reorient or relocate the receiving antenna.
- Increase the separation between the equipment and receiver.
- Connect the equipment into an outlet on a circuit different from that to which the receiver is connected.
- Consult the dealer or an experienced radio/TV technician for help.

FCC Caution:
This device complies with Part 15 of the FCC Rules. Operation is subject to the following two conditions: (1) This device may not cause harmful interference, and (2) this device must accept any interference received, including interference that may cause undesired operation. This product is compliant with the Consumer Product Safety Improvement Act of 2008, Public Law 110-314 (CPSIA)

FCC RF Radiation Exposure Statement:
This equipment complies with FCC radiation exposure limits set forth for an uncontrolled environment. End users must follow the specific operating instructions for satisfying RF exposure compliance. This transmitter must not co-located or operating in conjunction with any other antenna or transmitter.

CANADA-statement
This device complies with Innovation, Science and Economic Development Canada's licence-exempt RSS(s). Operation is subject to the following two conditions:

- This device may not cause interference; and
- This device must accept any interference, including interference that may cause undesired operation of the device.

Le présent appareil est conforme aux CNR d'Innovation, Sciences et Développement économique Canada exempt(s) de licence(s) applicables aux appareils radio exempts de licence. L'exploitation est autorisée aux deux conditions suivantes :

- L'appareil ne doit pas produire de brouillage;
- L'utilisateur de l'appareil doit accepter tout brouillage radioélectrique subi, même si le brouillage est susceptible d'en compromettre le fonctionnement.

Radiation Exposure Statement:
The product complies with Canada portable RF exposure limits set forth for an uncontrolled environment and are safe for intended operation as described in this manual. The further RF exposure reduction can be achieved if the product can be kept as far as possible from the user body or set the device to lower output power if such function is available.


Le produit est conforme aux limites d'exposition pour les appareils portables RF pour les États-Unis et le Canada établies pour un environnement non contrôlé. Le produit est sûr pour un fonctionnement tel que décrit dans ce manuel. La réduction aux expositions RF peut être augmentée si l'appareil peut être conservé aussi loin que possible du corps de l'utilisateur ou que le dispositif est réglé sur la puissance de sortie la plus faible si une telle fonction est disponible.

- Battery Caution:**
- Do not disassemble, impact, squeeze or throw into fire;
 - Do not continue to use if severe swelling;
 - Do not place in a high temperature environment;
 - Do not use after the battery is flooded;
 - Do not use any charger other than that specifically provided for use with the equipment;
 - Dispose of used batteries according to the instructions.

For warranty information and service, please visit www.turtlebeach.com/warranty


WARRANTY SERVICE FOR PURCHASES IN AUSTRALIA
Our goods come with guarantees that cannot be excluded under the Australian Consumer Law. For complete details please visit www.turtlebeach.com/warranty.

To make a warranty claim in Australia during the Warranty Period, Purchaser should contact the VTB repair centre: Tecworks International Pty Ltd, 13 Distribution Place, Seven Hills NSW 2147, Tel: 1300 074 512

European Union and European Free Trade Association (EFTA) Regulatory Compliance
Declaration of Conformity
Marking by this symbol: 

Hereby, Voyetra Turtle Beach Inc. declares that **Stealth 700 Gen 3** Headset Model: HWB80006 & Dongle Model: HWA0010 is in compliance with Directive 2014/30/EU(EMC), 2014/53/EU(RED), 2014/35/EU(LVD), 2015/863 amending Annex II to 2011/65/EC(RoHS), 2012/19/EU(WEEE), 2006/1907/EU(REACh), 94/62/EC (PACKAGING), 2006/66/EC (Battery), Electromagnetic Compatibility Regulations 2016(EMC), Radio Equipment Regulations 2017(Radio), Electrical Equipment Regulations 2018(Safety), The Restriction of the Use of Certain Hazardous Substances in Electrical and Electronic Equipment Regulations 2012.

The full text of the EU/UK declaration of conformity is available at the following internet address: <http://www.turtlebeach.com/homologation>
Radio frequency: 2400MHz
Operating frequency: 2400-2483.5MHz
Max. Output power: 4 dBm

 This symbol on the product or its packaging indicates that this product must not be disposed of with your other household waste. Instead, it is your responsibility to dispose of your waste equipment by handing it over to a designated collection point for the recycling of waste electrical and electronic equipment. The separate collection and recycling of your waste equipment at the time of disposal will help conserve natural resources and ensure that it is recycled in a manner that protects human health and the environment. For more information about where you can drop off your waste for recycling, please contact your local authority, or where you purchased your product.

Turtle Beach Europe Ltd is obligated as a producer with a main activity of selling under The Producer Responsibility Obligations (Packaging Waste) Regulations 2007. To fulfil our obligation we are registered with Comply Direct and their Recycling Room. Here you will find advice and information on packaging waste management, recycling symbols and the waste hierarchy principles of reduce, reuse and recycle. <https://www.complydirect.com/the-recycling-room/> For instructions in other languages, please visit <http://www.turtlebeach.com/homologation>

Copyright © 2024, Voyetra Turtle Beach, Inc. All rights reserved. No part of this document may be reproduced without permission. Any product names mentioned in this manual may be trademarks or registered trademarks and are the property of their respective owners.

 **Warning:**
To prevent possible hearing damage, do not listen at high volume levels for long periods.

無線機器
型番: HWB80006
認定: FCC, CE, BIA
電圧規格: 3.7VDC, 1400mAh
無線規格: 2.4GHz

 この装置は、クラスB機器です。この装置は、住宅環境で使用することを目的としていますが、この装置がラジオやテレビジョン受信機に近接して使用されると、受信機に影響を及ぼすことがあります。取扱説明書に従って正しい取り扱いをして下さい。

VCCI - B

 R 020-240197
 R 020-240008

 CCAJ24LP36072
 CCAJ24LP125079

BSMI 無害物質検査合格品 認許上: <https://bsmi.taiwan.gov.tw/>
品質管理: 此設備可調高音量, 請勿長時間收聽高音量, 可能導致聽覺損傷風險。

 Cet appareil se recycle
 R30J62
R30J62
R-R-VTB-HWB80006
R-R-VTB-HWA0010

420-257-005-501 RA

IMPORTANT | IMPORTANT

PLEASE MAKE SURE YOUR HEADSET IS UPDATED WITH THE LATEST FIRMWARE.
VEUILLEZ VOUS ASSURER QUE VOTRE CASQUE DISPOSE DE LA DERNIÈRE VERSION DU MICROLOGICIEL.



Android



iOS

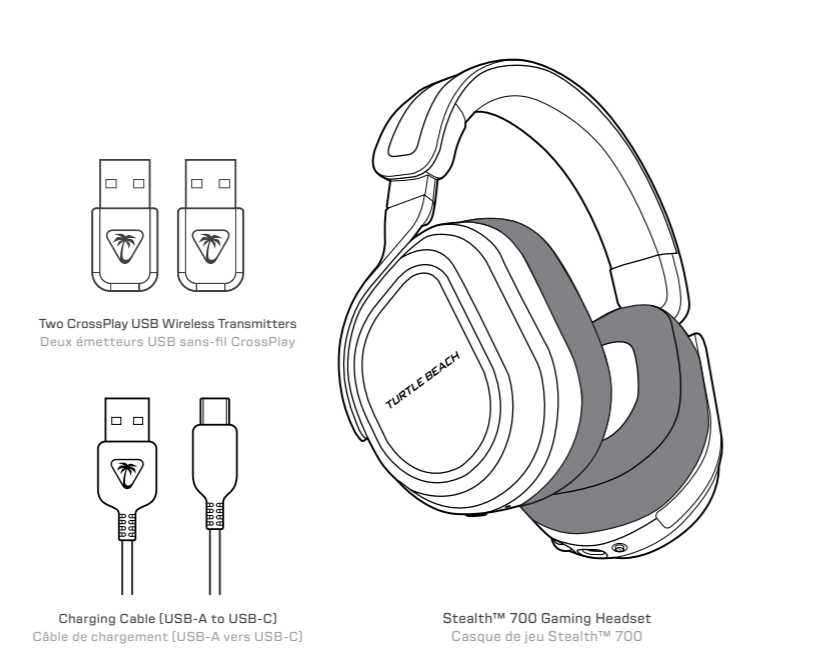
Download the Swarm™ II mobile app for Android or iOS to update your headset to the latest firmware and customize settings.

Alternatively, you can use the Swarm™ II desktop software for Windows available at turtlebeach.com/swarm2

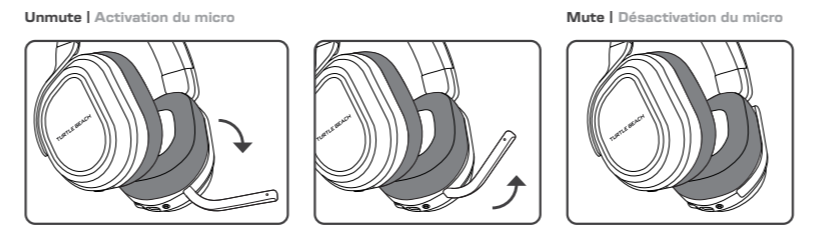
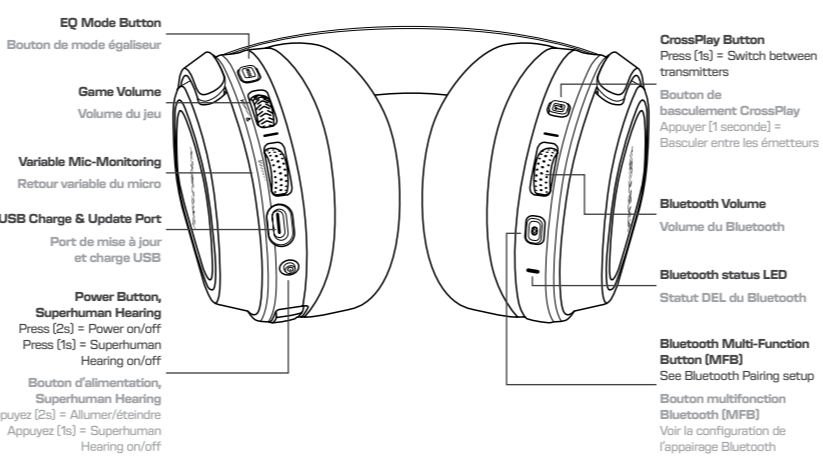
Téléchargez l'application mobile Swarm™ II pour Android ou iOS afin de mettre votre casque à jour avec la dernière version du micrologiciel et de personnaliser les paramètres.

Vous pouvez également utiliser le logiciel Swarm™ II pour Windows, disponible sur turtlebeach.com/swarm2

PACKAGE CONTENTS | CONTENU



HEADSET CONTROLS | COMMANDES DU CASQUE



BLUETOOTH® SETUP | CONFIGURATION BLUETOOTH®



Bluetooth® pairing:
The Stealth 700 will enter Bluetooth® pairing mode when first powered on. If no Bluetooth® connection is made within two minutes, pairing mode will stop.

- To manually enable Bluetooth® pairing mode at any time:**
- Press and hold the Bluetooth® multi-function button (MFB) until the "Pairing Bluetooth®" voice prompt plays.
 - After placing your headset in pairing mode, select the headset from within your device's Bluetooth® settings menu to connect.
 - The Bluetooth® MFB is used to answer and end calls as well as media playback control when connected to a compatible mobile phone.

Answering and ending phone calls:
When the headset is connected using the USB wireless transmitter in the default 2.4GHz Wireless mode, incoming calls can be answered by single pressing the Bluetooth® MFB. The headset will switch back to 2.4GHz Wireless mode when the call is ended by single pressing the Bluetooth® MFB again or using your mobile phone to end the call.

TURTLE BEACH™



Any questions? Des questions?
www.turtlebeach.com/support

Please register your product to receive important updates.
Enregistrez votre produit pour recevoir les mises à jour importantes.
www.turtlebeach.com/productregistration

For warranty, visit:
Concernant la garantie, visitez :
www.turtlebeach.com/warranty